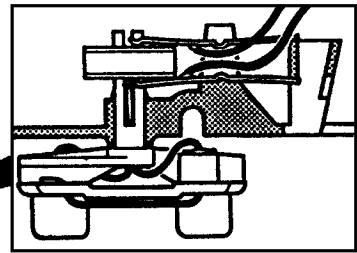
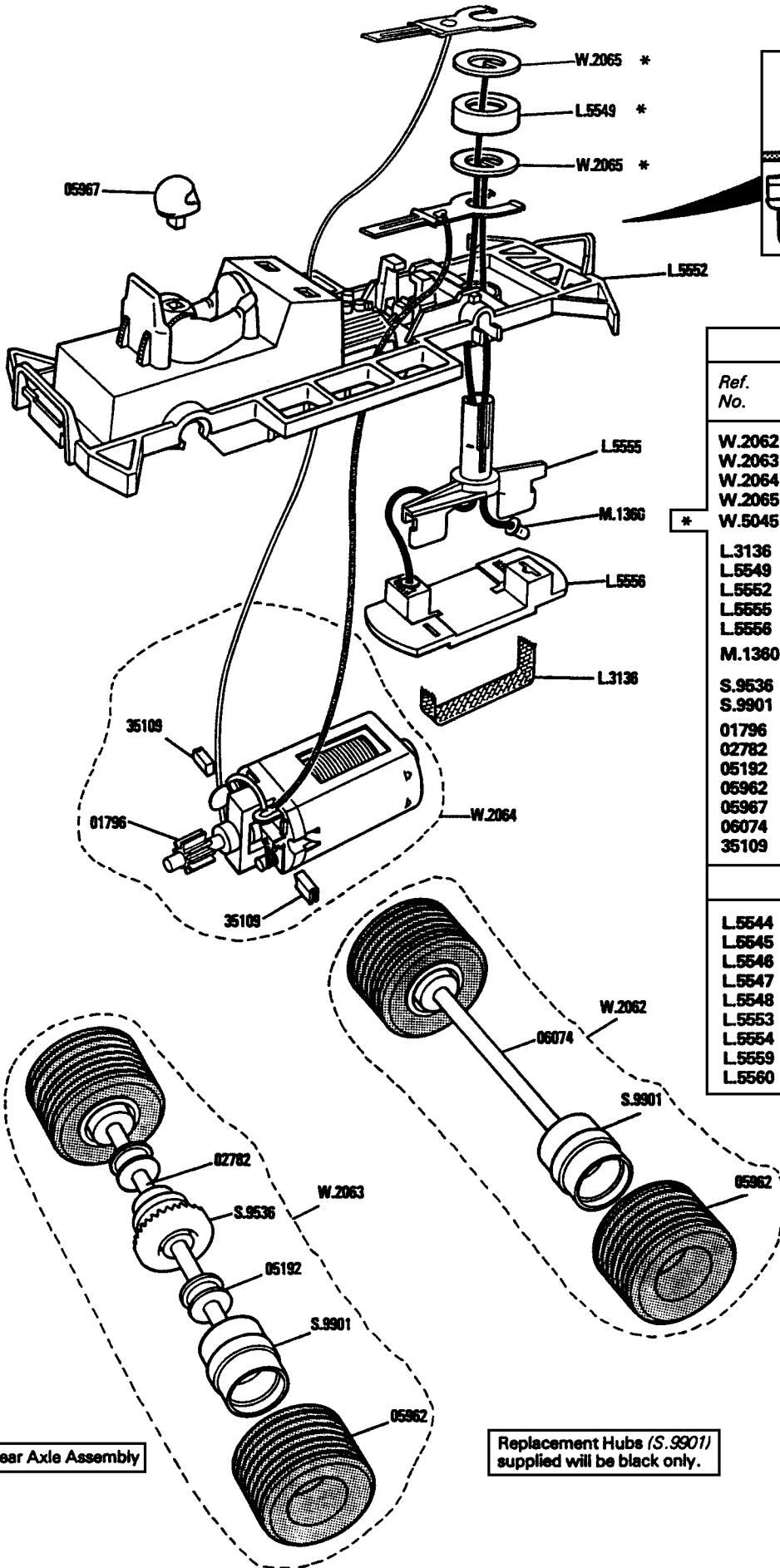


**SUPER STOX C.285, C.286**

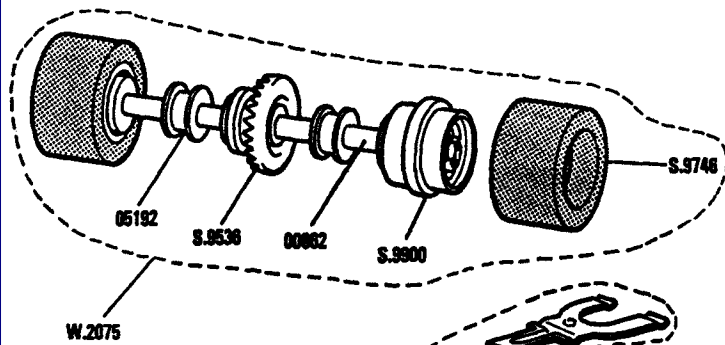


List of Parts	
Ref. No.	Item
W.2062	Axle Assembly—Front . . . . .
W.2063	Axle Assembly—Rear . . . . .
W.2064	Motor/Contact Assembly . . . . .
W.2065	Slip Ring Assembly . . . . .
* W.5045	Assembly of Two W.2065 with L.5549
L.3136	Pick-up Braid . . . . .
L.5549	Slip Ring Spacer . . . . .
L.5552	Chassis . . . . .
L.5555	Guide Pivot . . . . .
L.5556	Braid Plate . . . . .
M.1360	Eyelet . . . . .
S.9536	Contrate Gear . . . . .
S.9901	Hub—Front/Rear . . . . .
01796	Motor Pinion . . . . .
02782	Axle—Rear . . . . .
05192	Rear Axle Bearing . . . . .
05962	Tyre—Front/Rear . . . . .
05967	Drivers Head . . . . .
06074	Axle—Front . . . . .
35109	Carbon Brush . . . . .
Items not illustrated	
L.5544	Aerofoil . . . . .
L.5545	Number Plate—Small . . . . .
L.5546	Number Plate—Large . . . . .
L.5547	Exhaust Pipe—Long—L.H. . . . .
L.5548	Exhaust Pipe—Long—R.H. . . . .
L.5553	Bonnet—Red/Yellow . . . . .
L.5554	Cab—Red/Yellow . . . . .
L.5559	Exhaust Pipe—Short—L.H. . . . .
L.5560	Exhaust Pipe—Short—R.H. . . . .

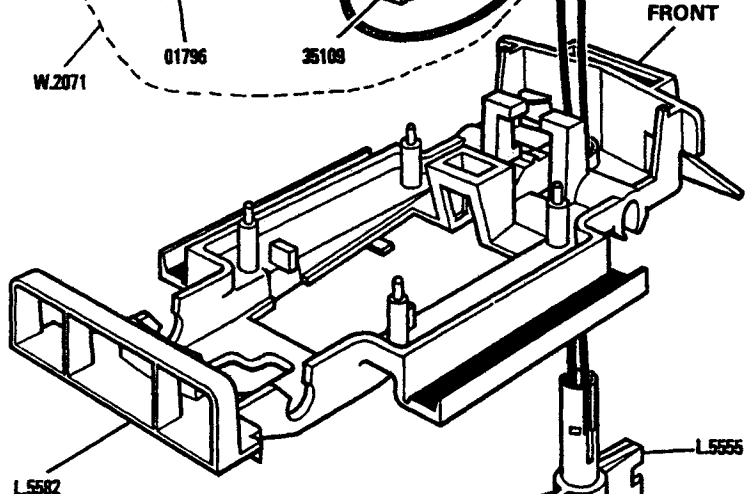
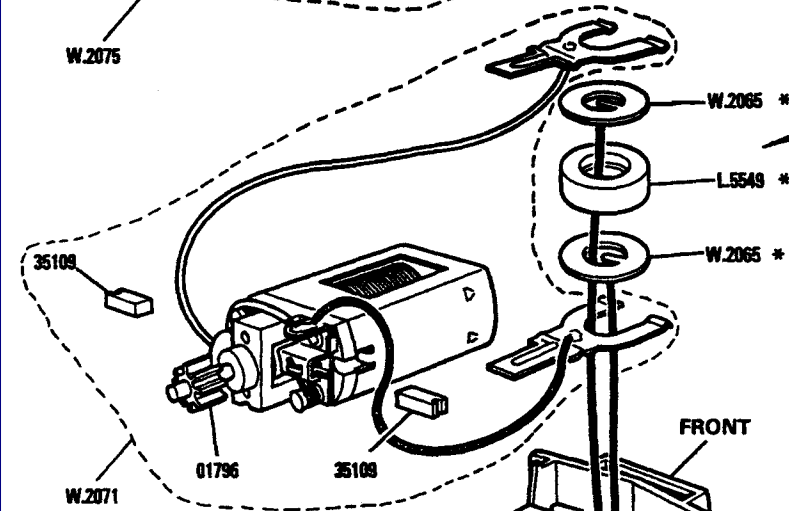
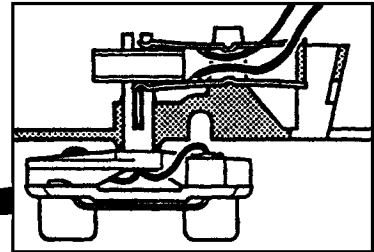
Rear Axle Assembly

Replacement Hubs (S.9901) supplied will be black only.

# BANGER RACER C.290, C.291

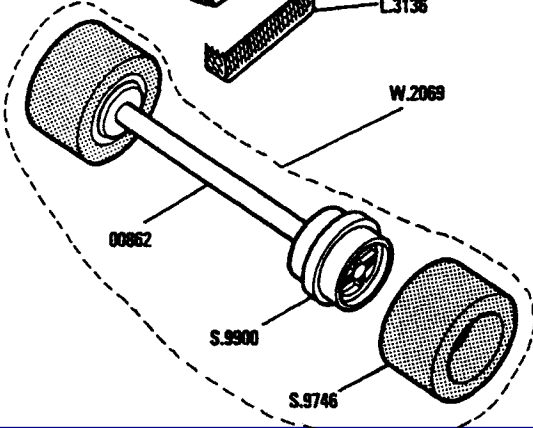


Rear Axle Assembly



To remove body, push in rear 'Number Plate' with screwdriver blade and prise off.

Replacement Hubs (S.9900) supplied will be black only.



List of Parts	
Ref. No.	Item
W.2065	Slip Ring Assembly . . . . .
W.2069	Axle Assembly - Front . . . . .
W.2071	Motor/Contact Assembly . . . . .
W.2075	Axle Assembly - Rear . . . . .
W.5045	Assembly of Two W.2065 with L.5549.
L.3136	Pick-up Braid . . . . .
L.5549	Slip Ring Spacer . . . . .
L.5555	Guide Pivot . . . . .
L.5556	Braid Plate . . . . .
L.5582	Underpan . . . . .
M.1360	Eyelet . . . . .
S.9536	Contrate Gear . . . . .
S.9746	Tyre . . . . .
S.9900	Hub - Front/Rear . . . . .
00862	Axle . . . . .
01796	Motor Pinion . . . . .
05192	Rear Axle Bearing . . . . .
35109	Carbon Brush . . . . .
<i>Items not illustrated</i>	
S.9515	Body - Red/Blue . . . . .
S.9517	Seat Unit . . . . .
05967	Drivers Head . . . . .

Modifications are made to models from time to time. If a spare part is required which does not coincide with the illustration, a full description should be given and, if necessary, a sketch or sample should accompany the order.