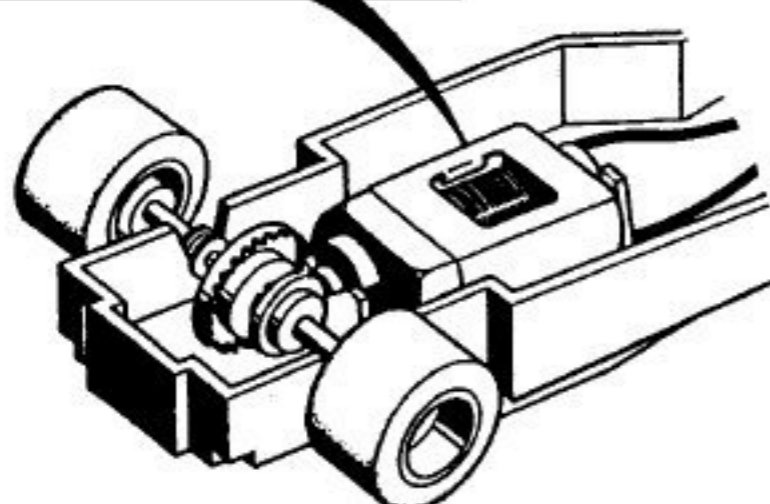


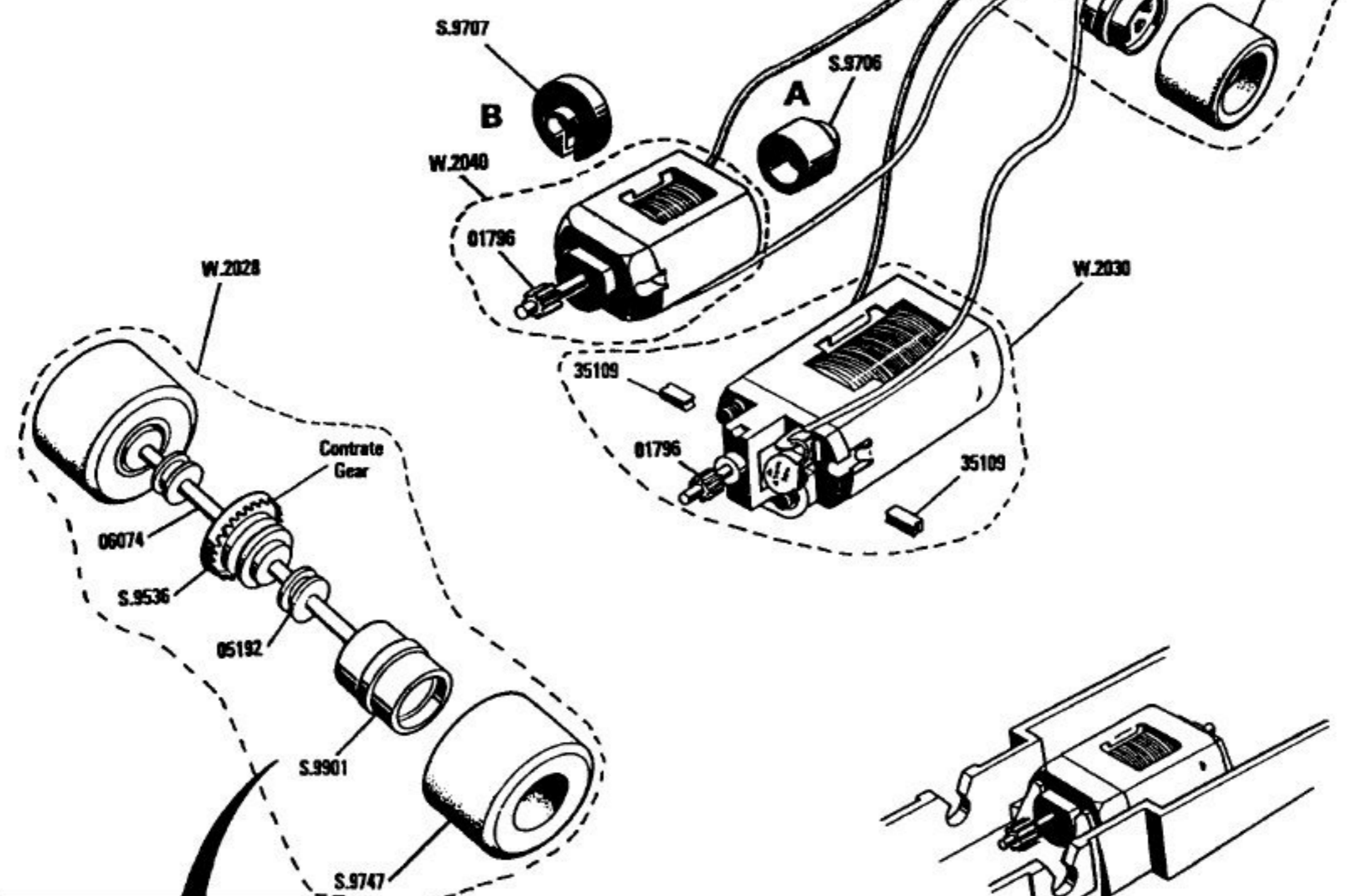
- C 103 BRM P160**
- C 104 Brabham BT 44B**
- C 105 U.O.P. Shadow**
- C 106 Wolf WR5—Blue**
- C 107 Wolf WR5—Red**
- C 108 McLaren M23**

There are two types of motor in use on these models, W.2030 and the newer W.2040 which, although smaller, has similar operating efficiency. Some car bodies have been modified to accept only the W.2040 motor.
Cars with unmodified bodies will accept either motor but if the W.2040 is used on such a body it must be fitted with Motor Brackets A and B, S.9706/7.

W.2040 motor fitted into unmodified body using Motor Brackets A and B, S.9706/7.



Views show car in "upside-down" position. When reassembling ensure that contra gear is on the correct side and that wires from motor to guide blade are not crossed.



Replacement Hubs, S.9900/1, supplied will be black only.

Modifications are made to models from time to time. If a spare part is required which does not coincide with the illustration, a full description should be given and, if necessary, a sketch or sample should accompany the order.

W.2040 motor fitted directly into modified car body.

ROVEX Service Centre Albert Street, Ramsgate, Kent, CT11 9HD, England.

SERVICE SHEET No. 99C

- C 103 BRM P160**
- C 104 Brabham BT 44B**
- C 105 U.O.P. Shadow**
- C 106 Wolf WR5—Blue**
- C 107 Wolf WR5—Red**
- C 108 McLaren M23**

List of Parts	
Ref. No.	Item
W.2027	Axle Assembly—Front (C. 103, C. 104, C. 105, C. 108)
W.2028	Axle Assembly - Rear
W.2030	Motor/Wire Lead Assembly
W.2040	Motor/Wire Lead Assembly
W.2050	Axle Assembly - Front (C. 106, C. 107)
S.8860	Eyelet
S.8881	Guide Blade Adaptor
S.9536	Contra Gear
S.9706	W.2040 Motor Bracket A
S.9707	W.2040 Motor Bracket B
S.9746	Tyre - Front
S.9747	Tyre - Rear
S.9900	Hub - Front
S.9901	Hub - Rear
00862	Axle—Front (C. 103, C. 104, C. 105, C. 108)
01796	Pinion
02545	Front Axle Spacer
05192	Rear Axle Bearing
05318	Pick-up Braid
06008	Guide Blade
06074	Axle—Rear (All models)—Front (C. 106, C. 107)
35109	Carbon Brush

Items not illustrated	
Bodies are supplied complete with Drivers Heads, Tail Vanes, Air Intakes, etc.	
05967	Drivers Head (All Models)
For C.103 B.R.M.	
W.1103	Body Assembly Complete *(Green)
S.8943	Air Intake *(White)
05961	Tail Vane *(White)
For C.104 Brabham	
W.1104	Body Assembly Complete *(Red)
S.9532	Tail Vane *(Red)
S.9533	Air Intake Main Section *(Red)
S.9538	Air Intake Top Section *(Red)
For C.105 Shadow	
W.1105	Body Assembly Complete *(Black)
05961	Tail Vane *(Black)
06053	Air Intake *(Black)
For C.106/C.107 Wolf	
W.1106	Body Assembly Complete (C. 106—Blue)
W.1107	Body Assembly Complete (C. 107—Red)
L.5131	Tail Vane *(Blue or Red)
For C.108 McLaren	
W.1108	Body Assembly Complete *(White)
S.9711	Air Intake *(Red)
S.9712	Tail Vane *(Red)

* When ordering state colour required

Notes